

KOLARC

BUILDING THE FUTURE

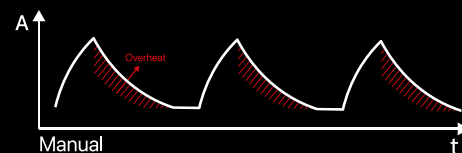
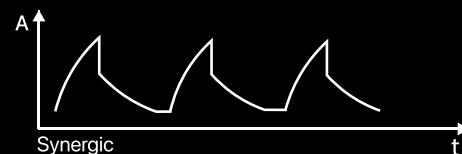


KM500 W



TECHNICAL SPECIFICATIONS

Input Voltage	400 V
Mains Voltage Tolerance	- 10 % / + 15 %
Minimum Welding Current	5 A
Maximum Welding Current	500 A
MIG Duty Cycle, 40°C	500 A %40, 420 A %60, 360 A %100
TIG Duty Cycle, 40°C	500 A %40, 420 A %60, 360 A %100
MMA Duty Cycle, 40°C	500 A %40, 420 A %60, 360 A %100
Open – Circuit Voltage	60 V
Factory Delivered Roller	1.0 + 1.2 mm / Steel
Weight	Liquid Cooled 100 kg
Standard Accessories	5 m Power Cable (4 x 6 mm ²) 3 m Earth Clamp (70 mm ²) Interconnection H.P (5 m) Standard 4 M Torch
Dimensions (W, L, H)	532mm x 843mm x 1085mm
Certification	CE



Synergic

IP21

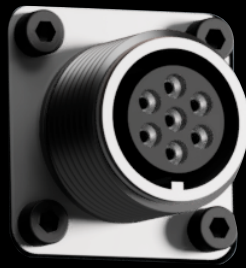
Modular Design

50

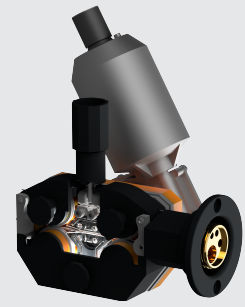
Program Memory

RL

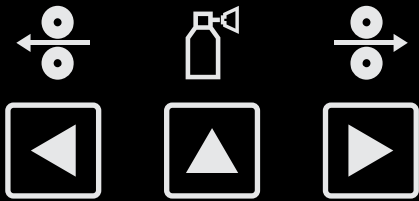
Torch and Cable
Calibration



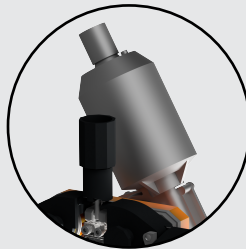
Military
Connector



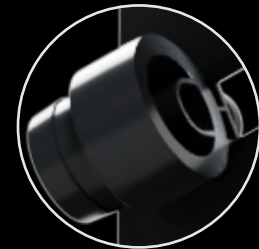
4x4 4 Rollers
Wire Drive



Wire Push
Pull-Back
Gas Testing



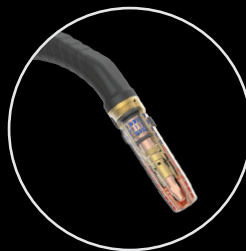
25 kHz
Ultra Precise
Wirefeed Encoder



HP
Support

CAN-FD

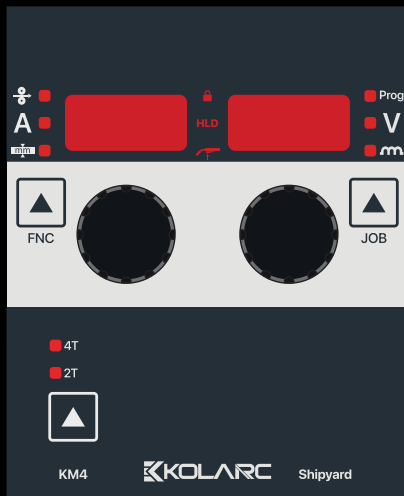
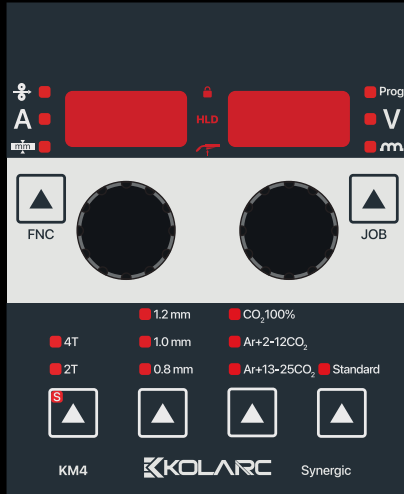
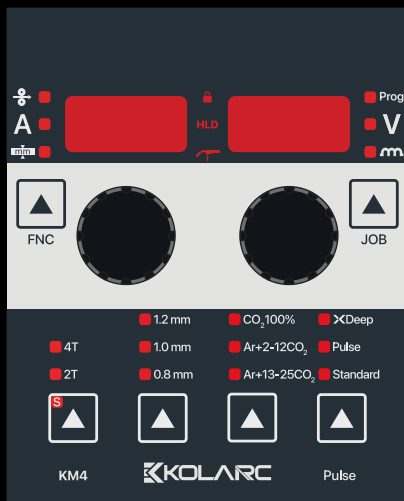
High Speed
Communication



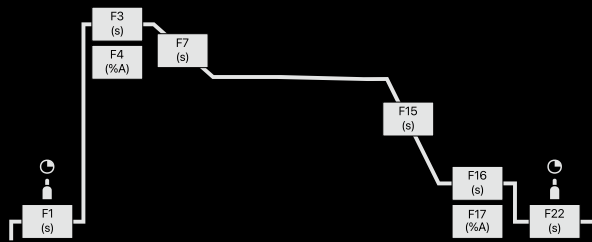
Dual Liquid
Cooling System



Intelligent
Cooling



Standard - Pulse		0.8	1.0	1.2	1.6
SG2 / SG3	Ar+18%CO ₂	8	10	12	16
	Ar+10%CO ₂	18	20	22	26
	CO ₂ 100%	28	30	32	36
CrNi - 316 / 1.4430	Ar+2.5%CO ₂	68	70	72	76
AlMg4,5 Mn	Ar100%	118	120	122	126
AlSi	Ar100%	138	140	142	146
XDeep - Pulse		0.8	1.0	1.2	1.6
SG2 / SG3	Ar+18%CO ₂	298	300	302	306
	Ar+10%CO ₂	308	310	312	316
CrNi - 318 / 1.4576	Ar+2.5%CO ₂		620	622	626
XRoot - Pulse		0.8	1.0	1.2	1.6
SG2 / SG3	Ar+18%CO ₂		360	362	
XCold - Pulse		0.8	1.0	1.2	1.6
SG2 / SG3	Ar+18%CO ₂	378	380	382	386
CrNi - 316 / 1.4430	Ar+2.5%CO ₂	698	700	702	
AlMg4,5 Mn	Ar100%		410	412	
AlSi	Ar100%		420	422	
Flux Cored Wire		0.8	1.0	1.2	1.6
Steel / FluxCore Metal	Ar+18%CO ₂	238	240	242	246
	Ar+18%CO ₂	248	250	252	256
	CO ₂ 100%			262	266
Steel / FluxCore Basic	Ar+18%CO ₂			602	
Steel FluxCore High Str.	Ar+18%CO ₂			592	
Steel / FluxCore Rutil	Self Shielded		720	722	
Application					
MIG/MAG Manual		4			
TIG (Lift Arc)		5			
MMA		6			
Gouging		7			



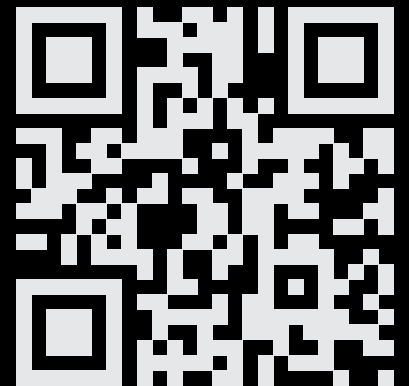
Function	Description	Min	Max
F1	Gas pre-flow (s)	0	10
F2	Start wire speed (m/min)	1	11
F3	Start time (s)	0	10
F4	Start current (%)	1	200
F5	Start arc correction (V)	-9.9	+9.9
F7	Start slope (s)	0	5
F15	End down slope (s)	0.05	10
F16	End time (s)	0	10
F17	End current (%)	1	200
F18	End arc correction (V)	-9.9	+9.9
F20	End burn back (-)	10	200
F21	End wire cut mode (-)	0	2
F22	Gas post-flow (s)	0	10
F23	Smart trigger (-)	0	1

Function	Description	Min	Max
F25	Hot start time (s)	0	10
F26	Hot start current (%)	1	200
F27	Arc force (-)	-50	+50
F28	Antistick (s)	0	2
F29	VRD function (-)	0	1
F34	Tack/stich mode (-)	0	2
F35	Cooling mode (-)	0	4
F36	Motor current (A)	0	-
F37	Motor current limit (A)	0.7	7
F38	Auto load default values (-)	0	1
F39	Motor control firmware (-)	-	-
F40	Power control firmware (-)	-	-
F41	Arc on time (h)	0	-
F42	Machine on time (h)	0	-
F45	Wire speed correction (m/min)	-2	+2
F49	Working mode	1	8
F50	RL cable calibration (mOhm)	0	30

Function	Description	Min	Max
F31	TIG V stop limit (V)	10	30
F32	TIG comfort stop sensitivity (V)	-2	+2

*Only available for Pulse option.

KOLARC



www.kolarc.com